




Communication through Effective Collection Management

Issues for Native Title Representative Bodies

Grace Koch

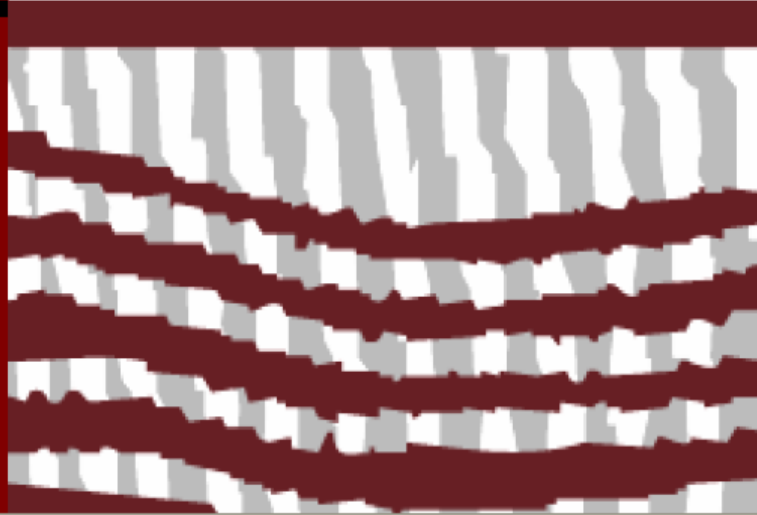
Native Title Research and Access Officer

Australian Institute of Aboriginal and Torres Strait Islander
Studies



The Future of Connection
Material held by Native Title
Representative Bodies:
Final Report

Grace Koch,
Native Title Research and Access Officer



<http://www.aiatsis.gov.au/ntru/futureconnection.html>

How do collection management principles fit in with training and retention of staff anthropologists?





Collection management principles

- Bringing material into collections
- Identifying them properly so that they can be found easily
- Ensuring that they are preserved properly
- Creating access conditions that meet with the Native Title Act and other legal requirements
- Having a plan for safe future storage for posterity

Training

- Data entry to get material online by listing and/or digitising the files
- Creation of either online or document resources in relation to a culture group/geographical area/special topic
- Online searches to evaluate and compile lists of helpful websites- useful for both legal staff and anthropologists
- Collection of data on the field with experienced anthropologists- mentoring

Benefits

Organisation

- Increase in efficiency for preparing claims
- Getting material organised
- Creating guides or resources that are area-specific
- Buildup of knowledgeable staff
- Reducing the collection management/filing responsibilities of senior staff

Anthropologist

- Reducing stress by giving time to become familiar with the holdings
- Experience in data entry and documentation
- Developing special expertise within specific culture areas
- Learning fieldwork skills from experienced staff
- Possible career advancement when senior positions become available



Staff retention

- Improvement of collection management practices
- Better cooperation and communication between legal and research sections of NTRBs
- Employment of more support staff
- Secure, private office space
- Funding for web access to relevant databases, such as Lexis/Nexis